

RESQTEC[®]

DEDICATED TO RESCUE, DEDICATED TO YOU

WELCOME



TOTAL SOLUTIONS

OCTOPUS™
HEAVY RESCUE SYSTEM





APPLICATIONS

- Extrication (Cross ramming)
- Heavy rescue
- SAR; Lifting, pushing and stabilization
- Trench
- Wall/Roof
- Mono, Bi, Tri-Pods
- Pushing, etc

RESQTEC[®]

DEDICATED TO RESCUE, DEDICATED TO YOU



PRO-FIX STRUTS

THE PROFIX MAX

WORLDS MOST POWERFULL STRUT

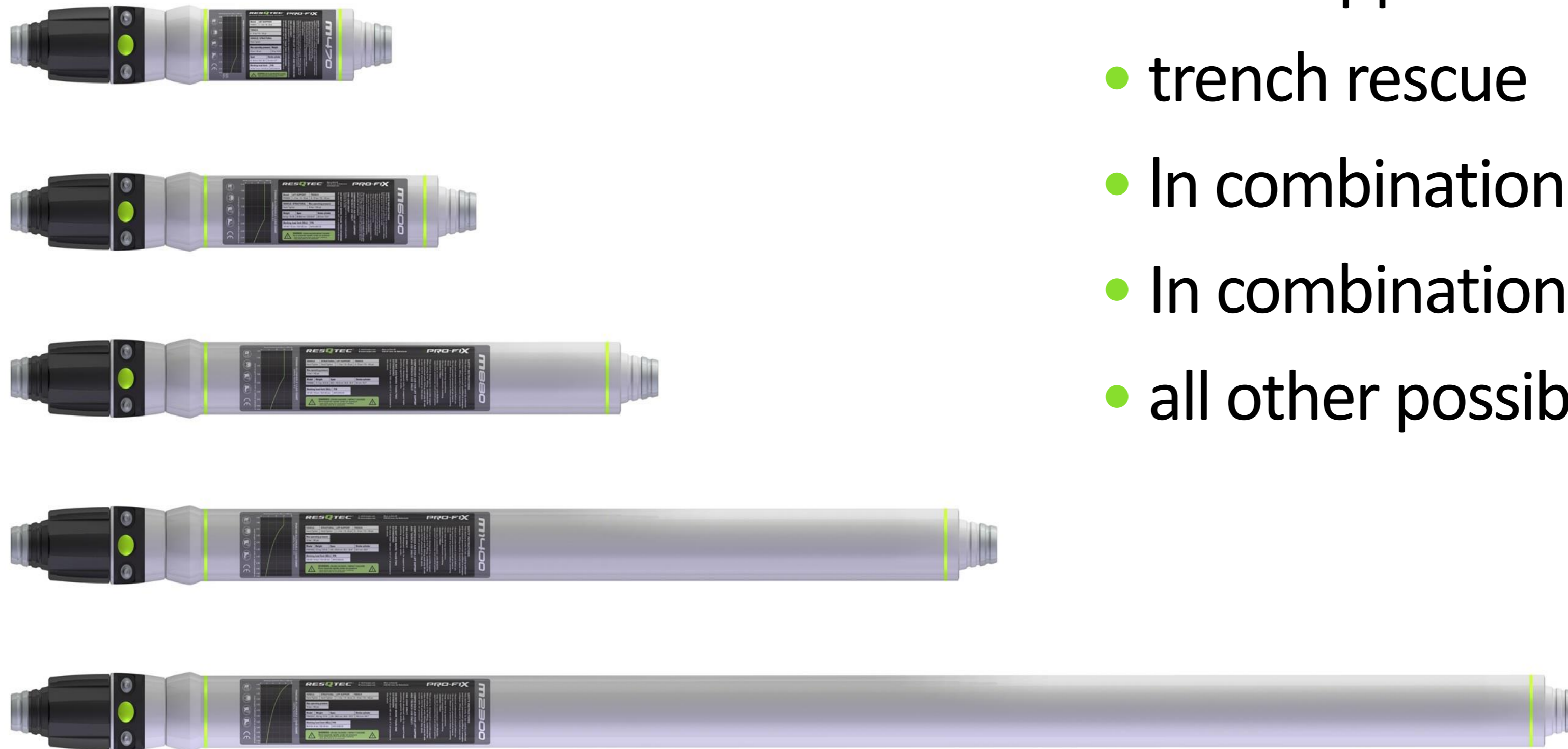
- One strut, hunderd applications
- 15 ton capacity (x 4:1 safety = 60 tons)
- Stepless locking
- Pnuematically, hydraullicly and manually
- Safety by remote control
- Adjustable collar for extra tension



RESQTEC[®]

DEDICATED TO RESCUE, DEDICATED TO YOU

APPLICATIONS



- roof support
- wall support
- trench rescue
- In combination with NT BAG
- In combination with ram for lifting
- all other possibilities



NEW NT HYBRID BAG



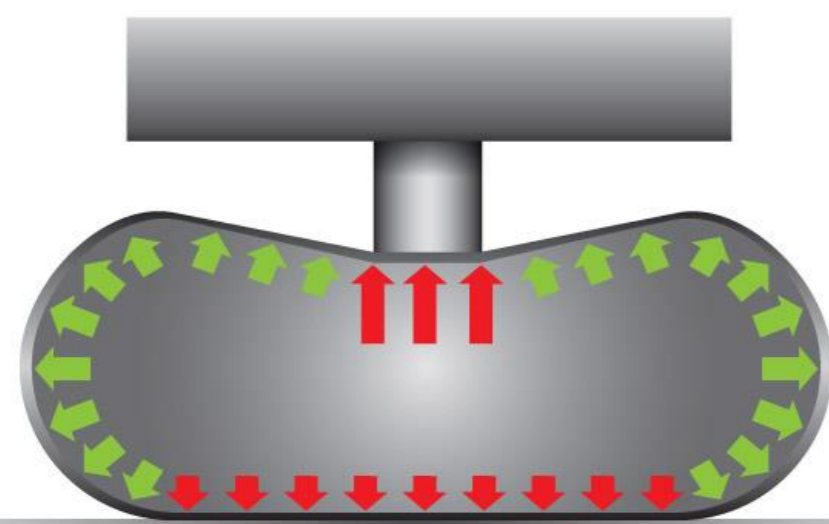
- The strongest in the industry
- Up to 165 tonnes
- Thin and light
- Stability Center
- Integrated point load capability
- 2-in-1
- Stackable up to two meter high

NEW NT HYBRID

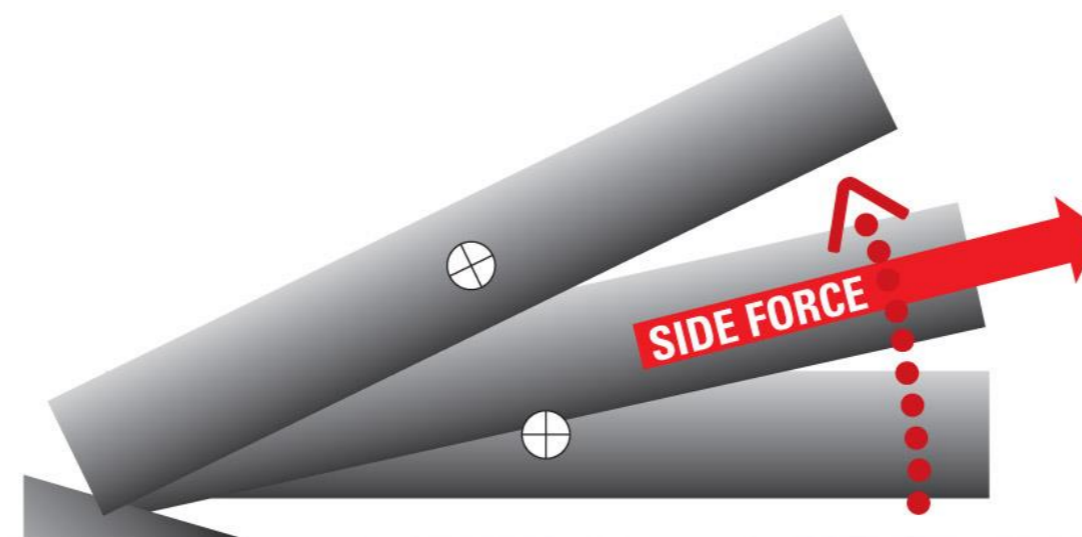
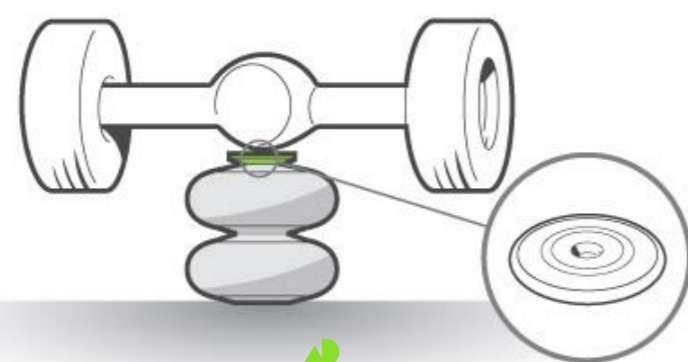
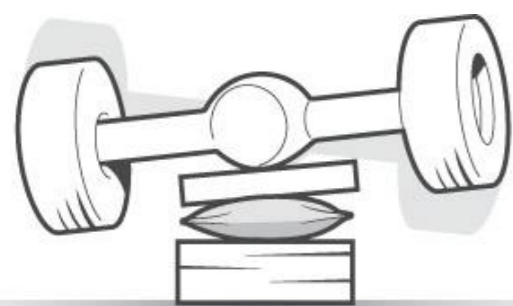
RESQTEC[®]

DEDICATED TO RESCUE, DEDICATED TO YOU

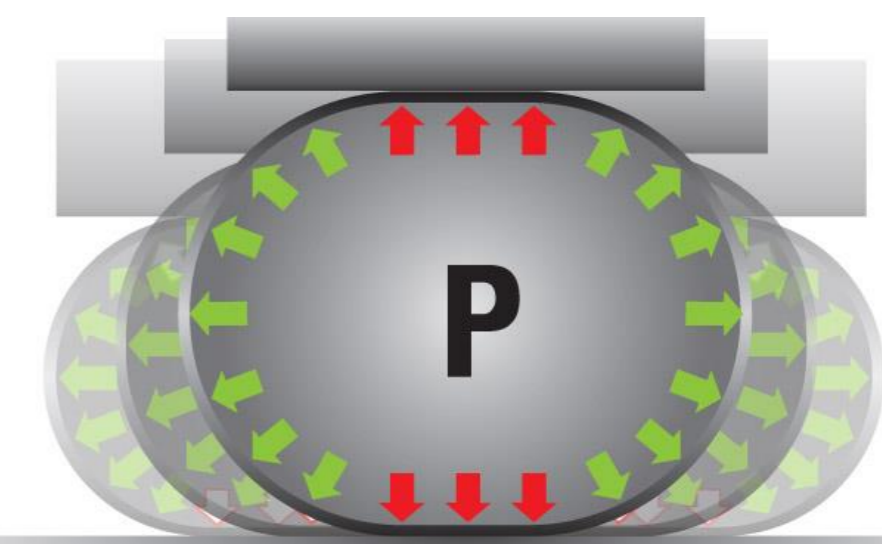
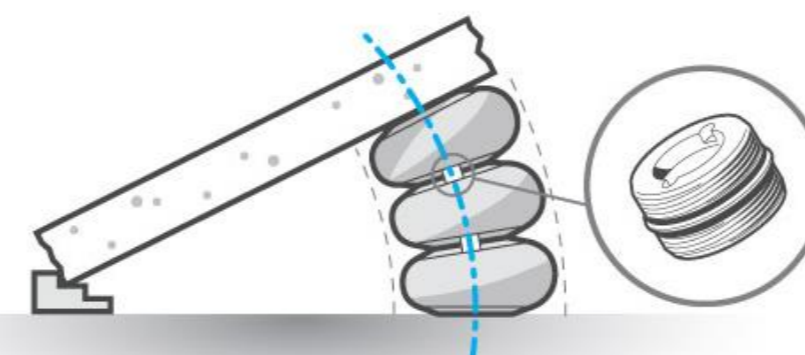
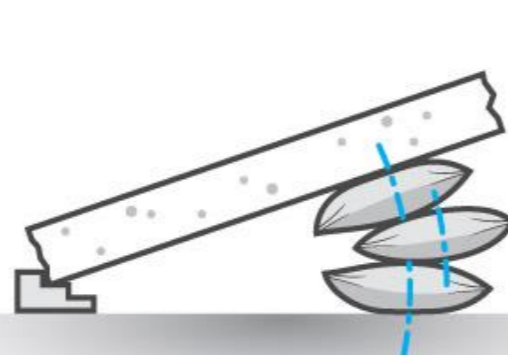
NEW NT HYBRID



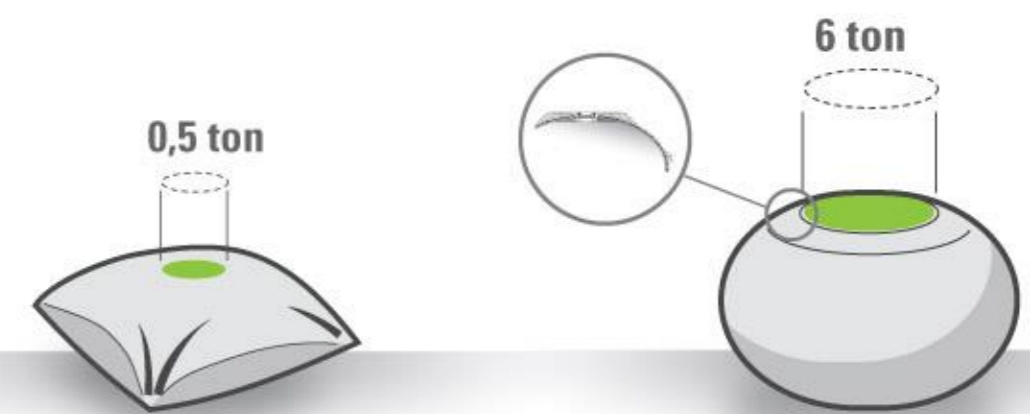
Pointed loads



Stability



Capacity



RESQTEC[®]

DEDICATED TO RESCUE, DEDICATED TO YOU

TRAIN LIFTING



RESQTEC[®]
DEDICATED TO RESCUE, DEDICATED TO YOU



105 Hub

TRAIN LIFTING

RESQTEC[®]

DEDICATED TO RESCUE, DEDICATED TO YOU

TRUCK LIFTING





RGCM:38-00
TARE: 7.80

304

TRUCK LIFTING

RESQTEC[®]

DEDICATED TO RESCUE, DEDICATED TO YOU



TRUCK LIFTING

RESQTEC[®]

DEDICATED TO RESCUE, DEDICATED TO YOU

A group of firefighters in full gear are gathered around a large, curved concrete structure. One firefighter is kneeling, using a tool to work on the base of the structure. Several hoses, including yellow and blue ones, are connected to the structure and run across the ground. A large black air tank is visible in the foreground. In the background, other firefighters and a man in a dark uniform are watching. A chain-link fence and a building with a sign that says "FIRE & E" are also visible.

CONCRETE LIFTING



DomeShelter

5

HOSES
TER USE

WARNING
KEEP OUT

CONCRETE LIFTING

RESQTEC[®]
DEDICATED TO RESCUE, DEDICATED TO YOU



- For covering huge distances
- Extensions and attachments
- 11,5 ton pushing force



RAM INTEGRATION

RESQTEC[®]

DEDICATED TO RESCUE, DEDICATED TO YOU



RAM V-SERIES PUSHING



RAM X-SERIES LIFTING



EDD TECHNOLOGY
GOING BEYOND HYDRAULICS

EDD RAM

EDD
TECHNOLOGY



- For all-weather conditions
- Durable and less maintenance
- Optimal safety – no pressure or compression
- Ergonomic compact design

RESQTEC[®]

DEDICATED TO RESCUE, DEDICATED TO YOU



X

PROFIX - STOP WOOD



CRIBBING BLOCKS

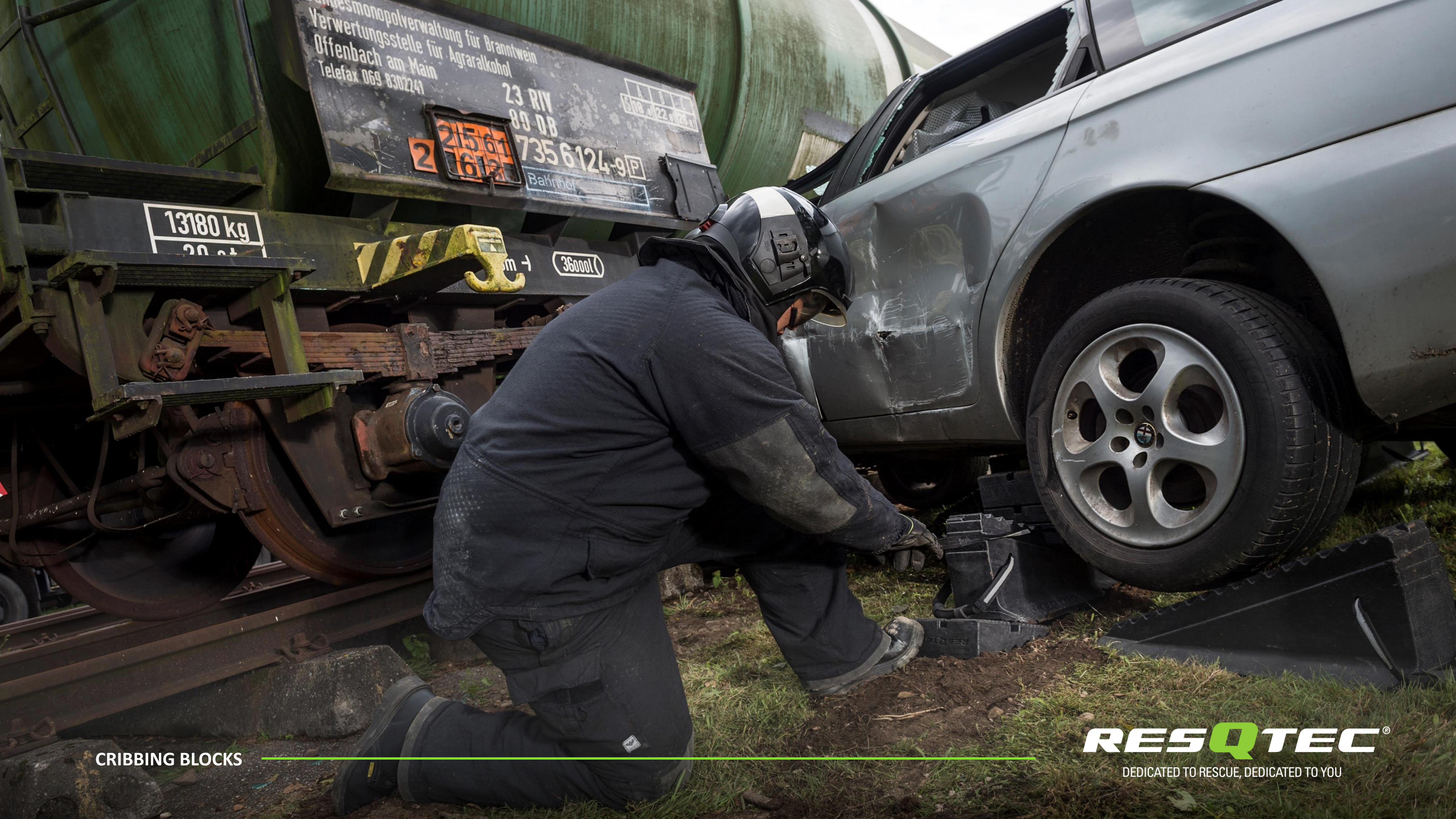
CRIBBING BLOCKS

- 60 ton capacity
- High durability
- All round stabilization
- Splinter free
- No absorption of fluids



RESQTEC[®]

DEDICATED TO RESCUE, DEDICATED TO YOU



Verwertungsfirma
Offenbach am Main
Telefax 069 8302241
23 RIV
89 08
735 6124-9P
Bahnhof

13180 kg
20 st

36000

CRIBBING BLOCKS

RESQTEC[®]
DEDICATED TO RESCUE, DEDICATED TO YOU



APPLICATIONS

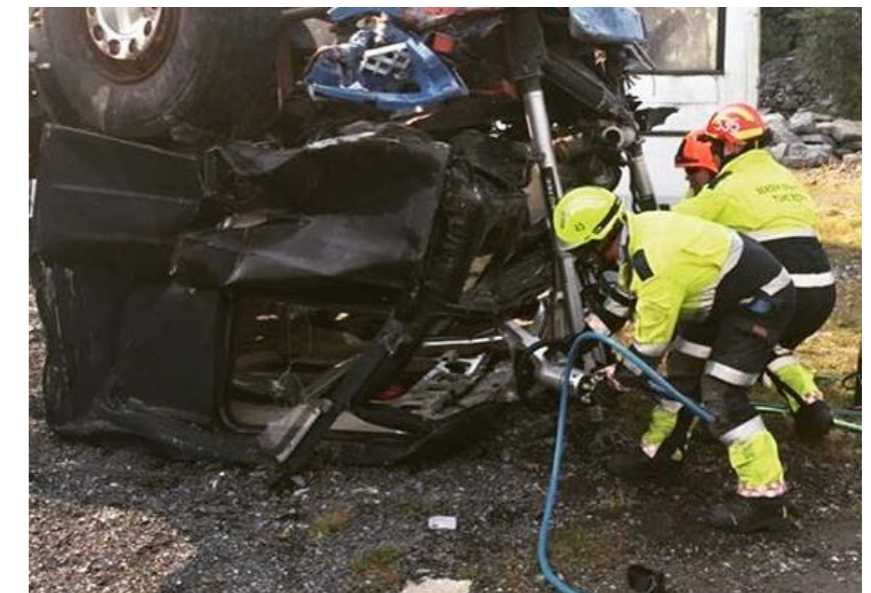
- Extrication (Cross ramming)
- Heavy rescue
- SAR; Lifting, pushing and stabilization
- Trench
- Wall/Roof
- Mono, Bi, Tri-Pods
- Pushing, etc

RESQTEC[®]

DEDICATED TO RESCUE, DEDICATED TO YOU



EXTRICATION



RESQTEC[®]
DEDICATED TO RESCUE, DEDICATED TO YOU

CROSS RAMMING



RESQTEC[®]

DEDICATED TO RESCUE, DEDICATED TO YOU



HEAVY RESCUE



RESQTEC[®]

DEDICATED TO RESCUE, DEDICATED TO YOU

LIFTING/PUSHING



RESQTEC[®]

DEDICATED TO RESCUE, DEDICATED TO YOU



STABILIZATION



RESQTEC[®]

DEDICATED TO RESCUE, DEDICATED TO YOU



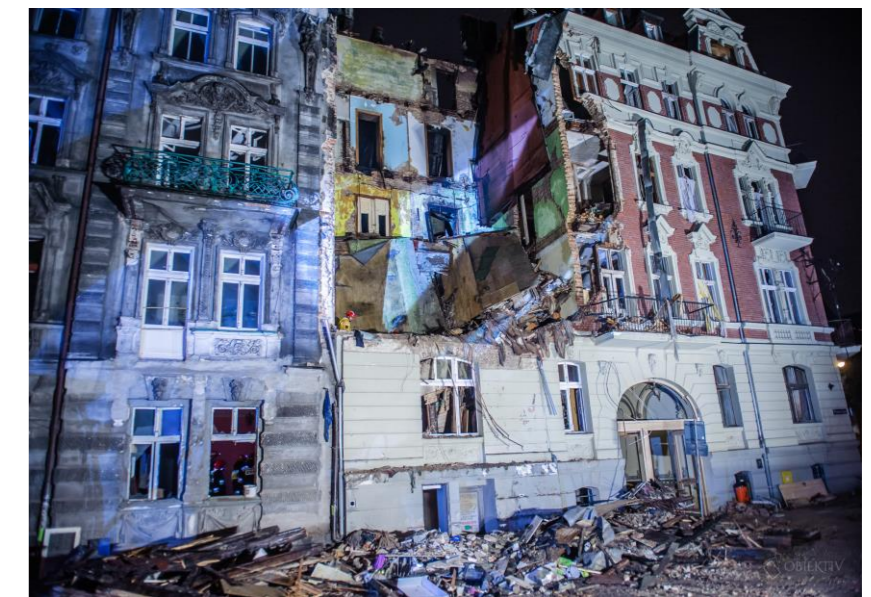
SAR



RESQTEC[®]

DEDICATED TO RESCUE, DEDICATED TO YOU

ROOF



RESQTEC[®]
DEDICATED TO RESCUE, DEDICATED TO YOU

WALL SUPPORT

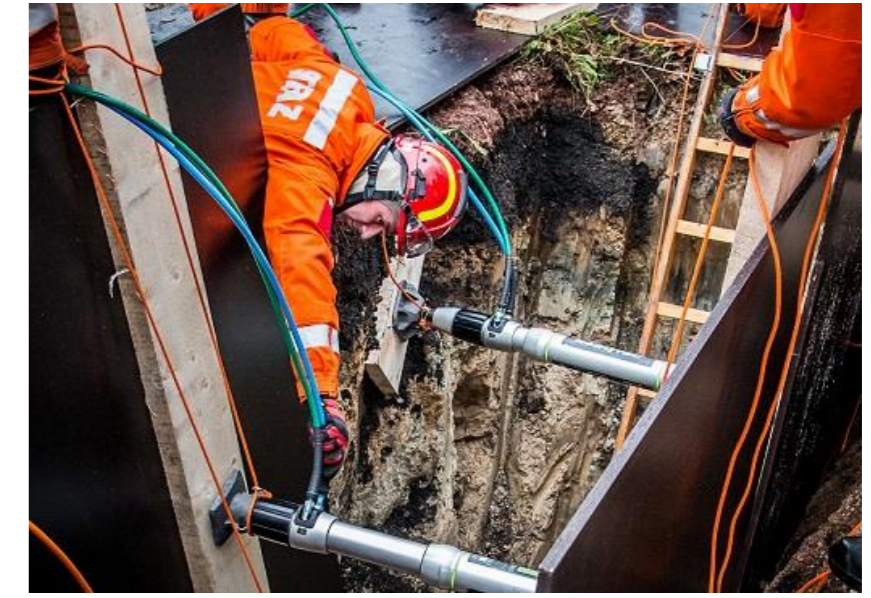


RESQTEC[®]

DEDICATED TO RESCUE, DEDICATED TO YOU



TRENCH



RESQTEC[®]
DEDICATED TO RESCUE, DEDICATED TO YOU



TUNNEL



RESQTEC[®]

DEDICATED TO RESCUE, DEDICATED TO YOU

LIFTING/PUSHING



RESQTEC[®]

DEDICATED TO RESCUE, DEDICATED TO YOU

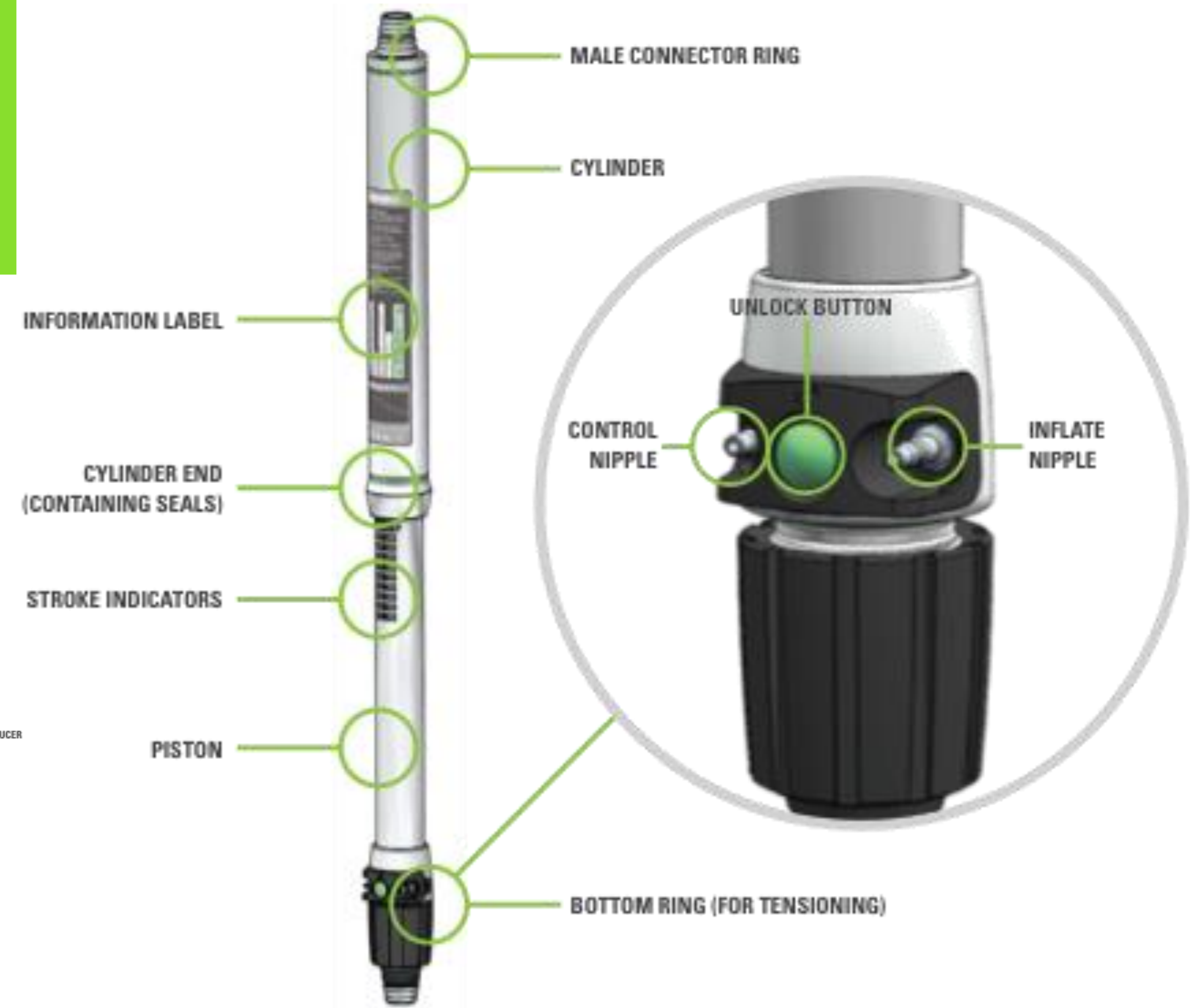
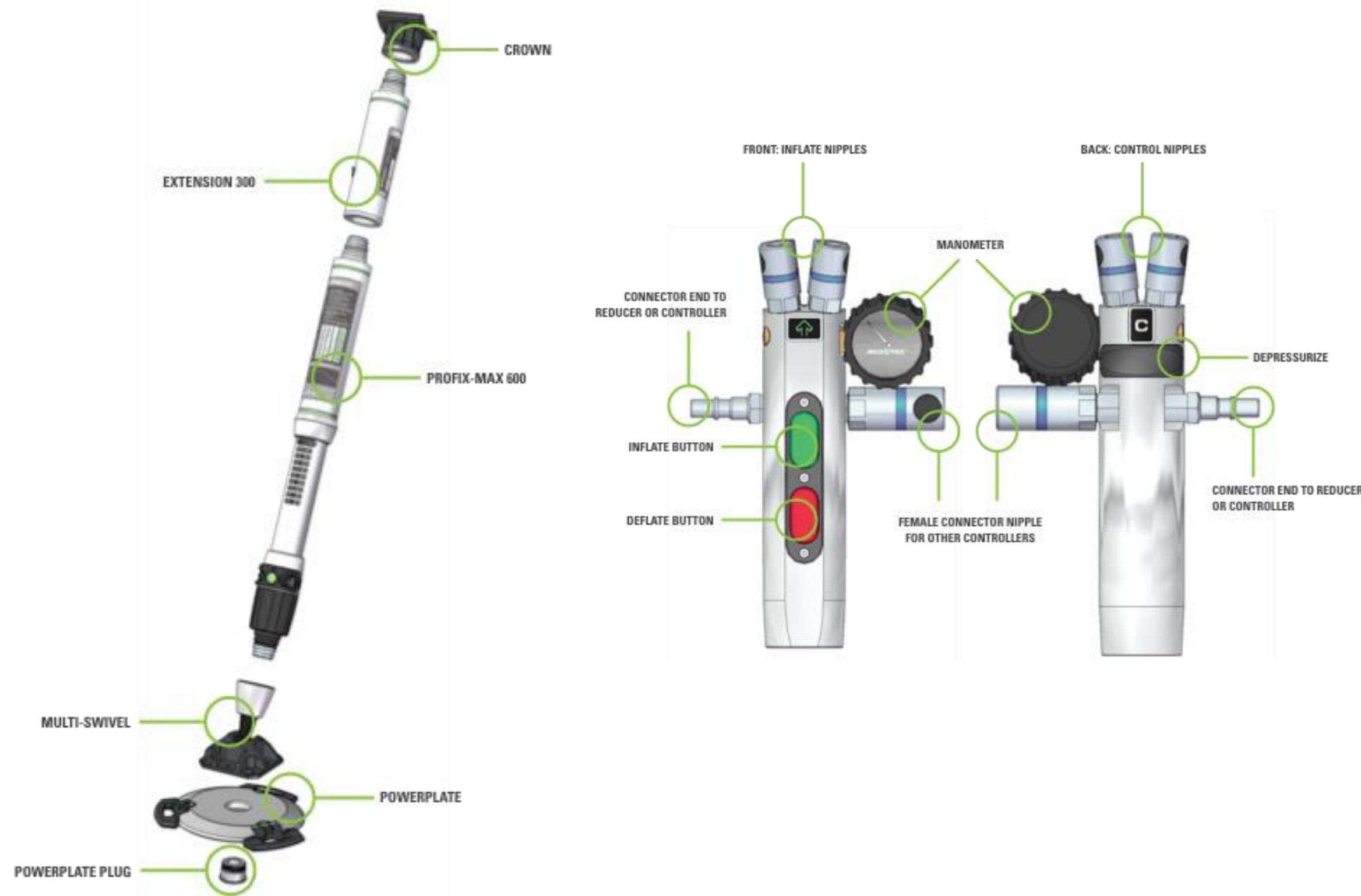
MONO-BI-TRIPOD



RESQTEC[®]

DEDICATED TO RESCUE, DEDICATED TO YOU

COMPONENT IDENTIFICATION



RESQTEC[®]

DEDICATED TO RESCUE, DEDICATED TO YOU

PODS AND TRENCH

- Fully integrated system
- Most powerful
- Optimized for firefighters and paramedics



RESQTEC[®]

DEDICATED TO RESCUE, DEDICATED TO YOU

DETAILED AND CLEAR MANUALS



USER MANUAL PRO-FIX-MAX STABILIZATION SYSTEM

ENGLISH ORIGINAL USER MANUAL PRO-FIX-MAX STABILIZATION SYSTEM



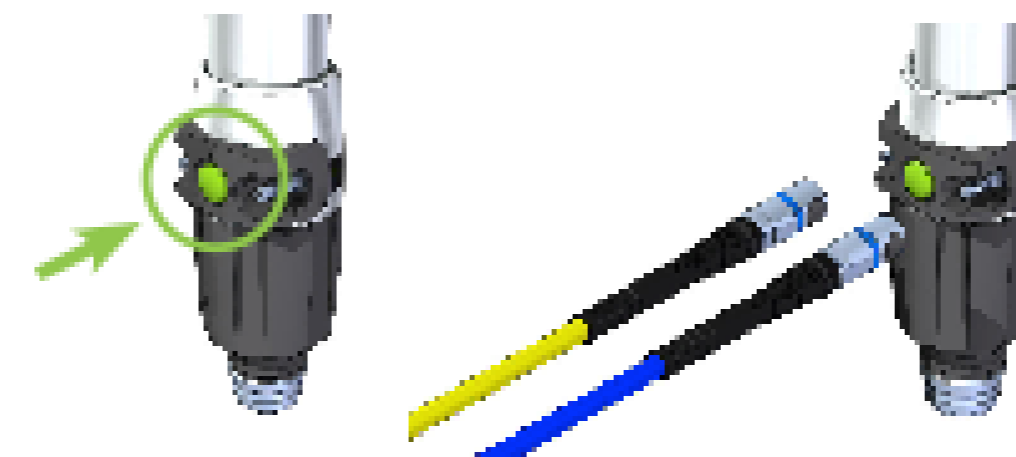
RESQTEC
WWW.RESQTEC.COM

USER MANUAL
MODULAR POD SYSTEM

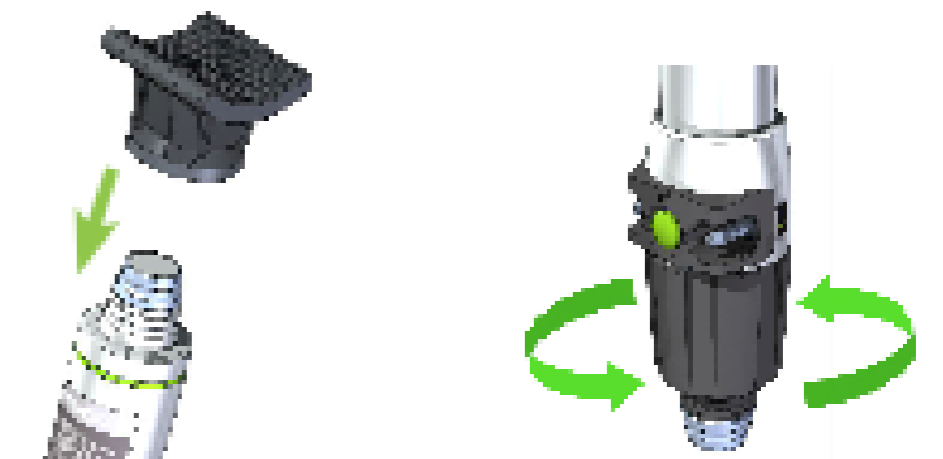
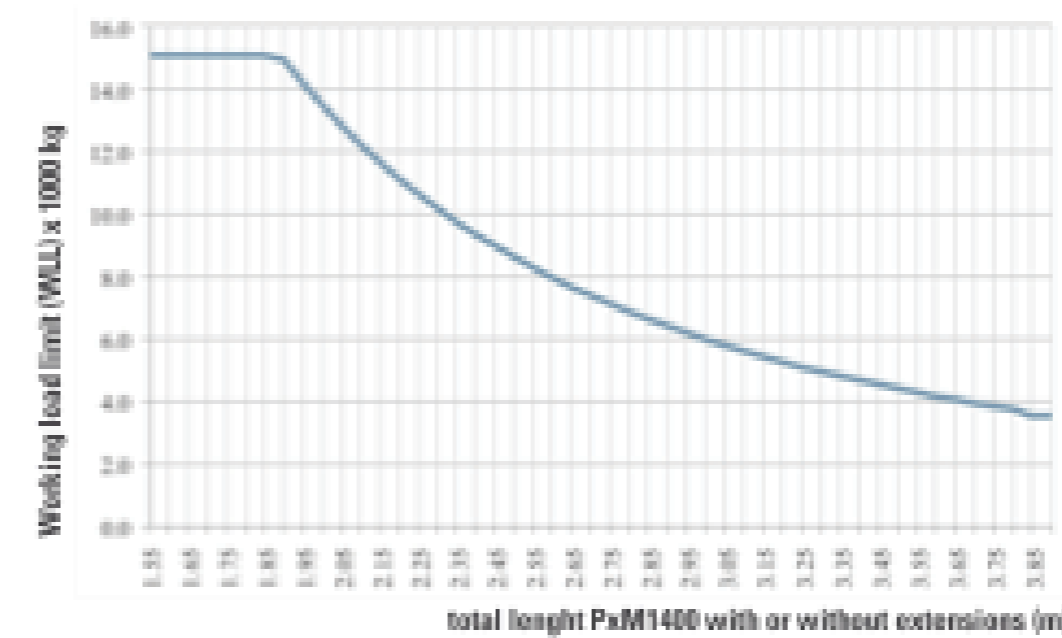
ENGLISH ORIGINAL USER MANUAL MODULAR POD SYSTEM

POD SERIES

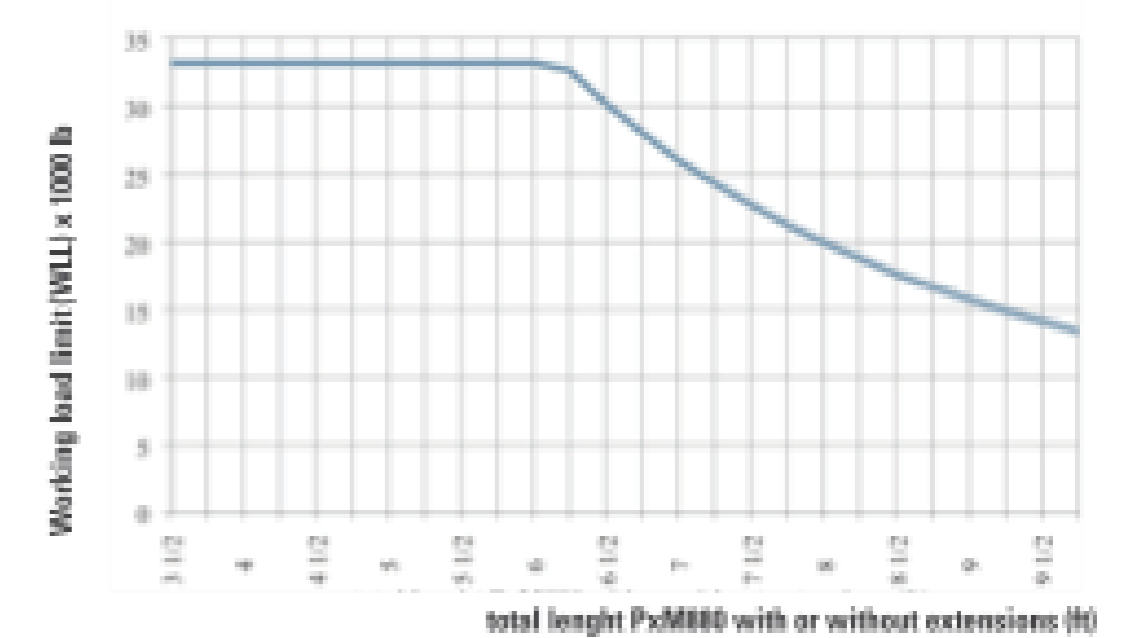
RESQTEC
WWW.RESQTEC.COM



PXM 1400 allowable load chart (SI-System) - Safety Factor 4:1



PXM 880 allowable load chart (Imperial System) - Safety Factor 4:1



RESQTEC

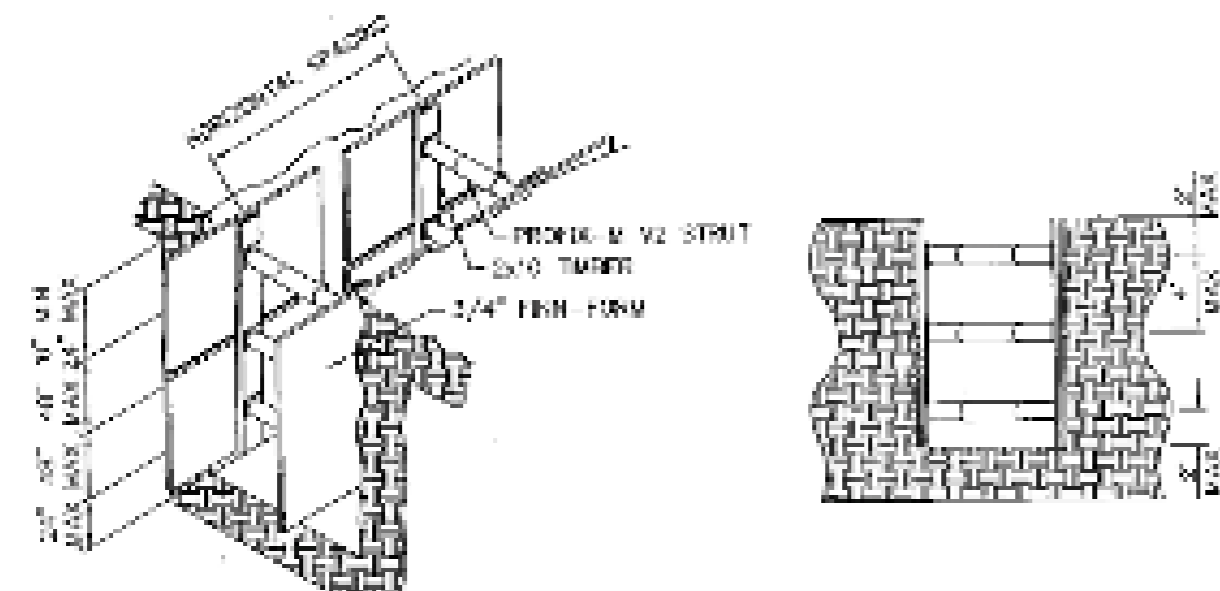
DEDICATED TO RESCUE, DEDICATED TO YOU

TABULATED DATA

As part of the United States Department of Labor, the Occupational Health and Safety Administration (OSHA) assures safe and healthful working conditions for working men and women by setting and enforcing standards.



Based on the OSHA enforcing standards, the following tabulated data is given to assure safe working conditions while shoring trenches.

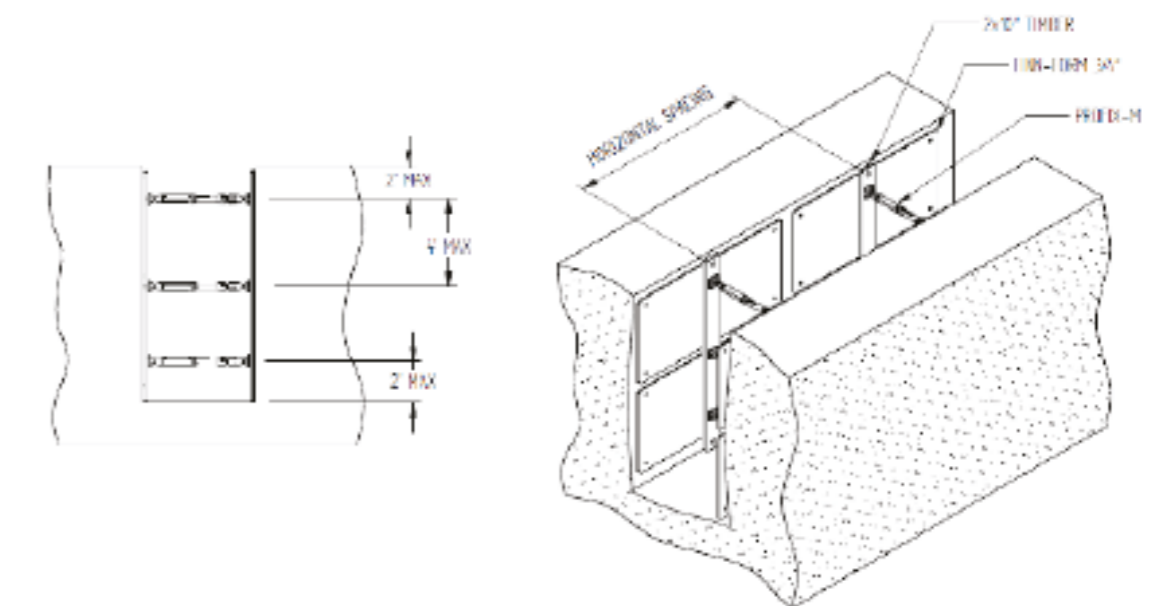


Soil Type	Trench depth (ft)	Trench width (ft)	Horizontal spacing (ft)	Vertical spacing (ft)
A-25	4 to 10	Up to 6	8	4
		6 to 12	8	4
		12 to 16	4	4
	10 to 16	Up to 6	8	4
		6 to 12	5	4
		12 to 16	5	2
16 to 20	Up to 6	8	4	
	6 to 12	4	4	
	12 to 16	3	3	
B-45	4 to 10	Up to 6	8	4
		6 to 12	5	4
		12 to 16	3	2
	10 to 16	Up to 6	8	4
		6 to 12	6	2
		12 to 16	3	2
16 to 20	Up to 6	8	4	
	6 to 12	5	2	
	12 to 16	2	2	
C-60	4 to 10	Up to 6	8	4
		6 to 12	4	4
		12 to 16	4	2
	10 to 16	Up to 6	8	4
		6 to 12	4	2
		12 to 16	2	2
16 to 20	Up to 6	8	4	
	6 to 12	3	2	
	12 to 16	2	2	

Soil Type	Trench depth (ft)	Trench width (ft)	Horizontal spacing (ft)	Vertical spacing (ft)
A-25	4 to 10	Up to 6	8	4
		6 to 12	8	4
		12 to 16	4	4
	10 to 16	Up to 6	8	4
		6 to 12	8	4
		12 to 16	5	4
16 to 20	Up to 6	8	4	
	6 to 12	8	4	
	12 to 16	6	3	
B-45	4 to 10	Up to 6	8	4
		6 to 12	8	4
		12 to 16	5	4
	10 to 16	Up to 6	8	4
		6 to 12	6	4
		12 to 16	4	3
16 to 20	Up to 6	8	4	
	6 to 12	8	4	
	12 to 16	3	3	
C-60	4 to 10	Up to 6	8	4
		6 to 12	8	4
		12 to 16	6	3
	10 to 16	Up to 6	8	4
		6 to 12	4	4
		12 to 16	3	3
16 to 20	Up to 6	8	4	
	6 to 12	5	3	
	12 to 16	3	2	

TABULATED DATA – SAFETY FACTOR 4:1
Plywood & Plank
 TABULATED DATA FOR USE IN EXCAVATIONS
 MAXIMUM ALLOWABLE SPACING
 Surcharge: 72 lb.

SOIL TYPE	TRENCH DEPTH (FT.)	TRENCH WIDTH (FT.)	HORIZONTAL SPACING (FT.)	VERTICAL SPACING (FT.)	LOAD PER STRUT (LB.)	PROFIX MAX ALLOWABLE LOAD (LB.)	LOWEST POSITION (FT.) (2 FT. FROM BOTTOM)	MAXIMUM SOIL PRESSURE* (PSF)
A-25	4 to 10	up to 6	8	4	8704	33148	8	272
		6 to 12	8	4	8704	8874	8	272
		12 to 16	4	4	4352	4992	8	272
	10 to 16	up to 6	8	4	13504	33148	14	422
		6 to 12	5	4	8440	8874	14	422
		12 to 16	5	2	4220	4992	14	422
	16 to 20	up to 6	8	4	16704	33148	18	522
		6 to 12	4	4	8352	8874	18	522
		12 to 16	3	3	4698	4992	18	522
B-45	4 to 10	up to 6	8	4	13824	33148	8	432
		6 to 12	5	4	8640	8874	8	432
		12 to 16	5	2	4320	4992	8	432
	10 to 16	up to 6	8	4	22464	33148	14	702
		6 to 12	6	2	8424	8874	14	702
		12 to 16	3	2	4212	4992	14	702
	16 to 20	up to 6	8	4	28224	33148	18	882
		6 to 12	5	2	8820	8874	18	882
		12 to 16	2	2	3528	4992	18	882
C-60	4 to 10	up to 6	8	4	17864	33148	8	552
		6 to 12	4	4	8832	8874	8	552
		12 to 16	4	2	4416	4992	8	552
	10 to 16	up to 6	8	4	29184	33148	14	912
		6 to 12	4	2	7296	8874	14	912
		12 to 16	2	2	3648	4992	14	912
	16 to 20	up to 6	8	4	27648	33148	18	1152
		6 to 12	3	2	8912	8874	18	1152
		12 to 16	2	2	4808	4992	18	1152

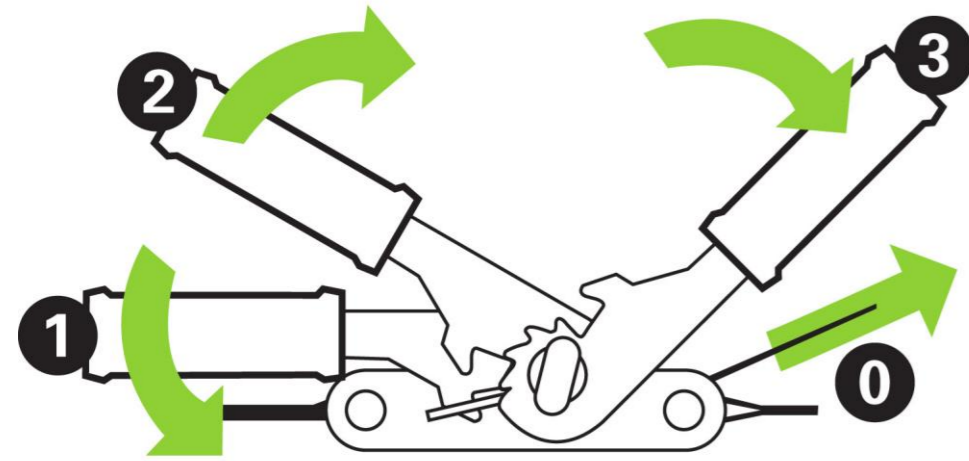


DEDICATED TO RESCUE, DEDICATED TO YOU



NEW RESCUE STRAP

NEW RESCUE STRAP



- 5 tons capacity
- Quick start system
- Easy extra tensioning
- Controlled release



RESQTEC[®]
DEDICATED TO RESCUE, DEDICATED TO YOU



RAPID VEHICLE STAB

RAPID VEHICLE STAB



- Stability triangle
- Rapid
- High capacity and all round
- Simple and modular

1. place strut 2. secure hook 3. pull strap

RESQTEC[®]

DEDICATED TO RESCUE, DEDICATED TO YOU

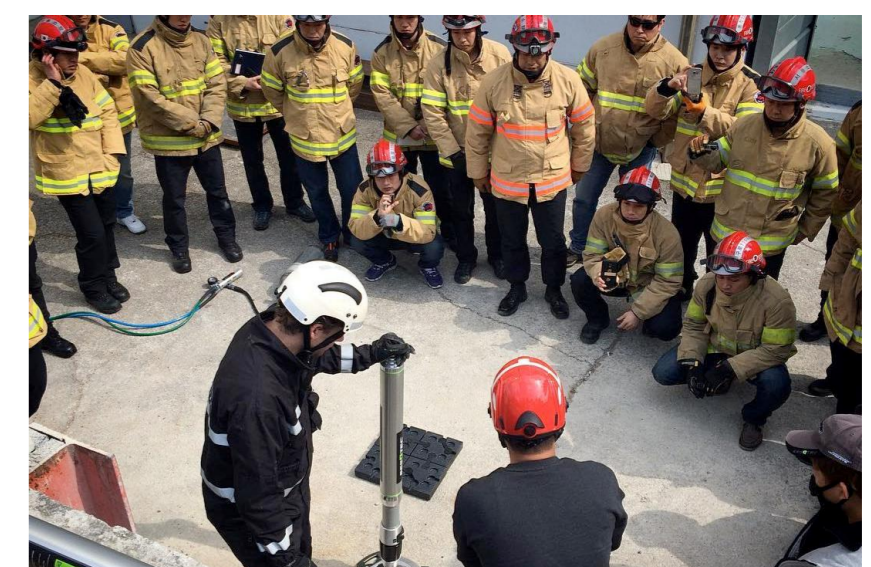
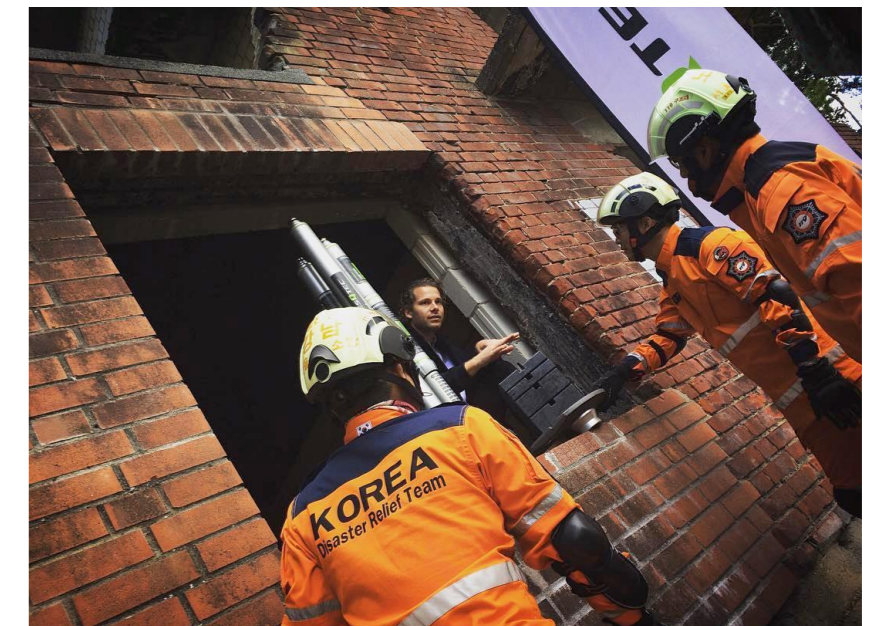
TRAINING



RESQTEC[®]

DEDICATED TO RESCUE, DEDICATED TO YOU

TRAINING



RESQTEC[®]

DEDICATED TO RESCUE, DEDICATED TO YOU

RESQTEC[®]

DEDICATED TO RESCUE, DEDICATED TO YOU